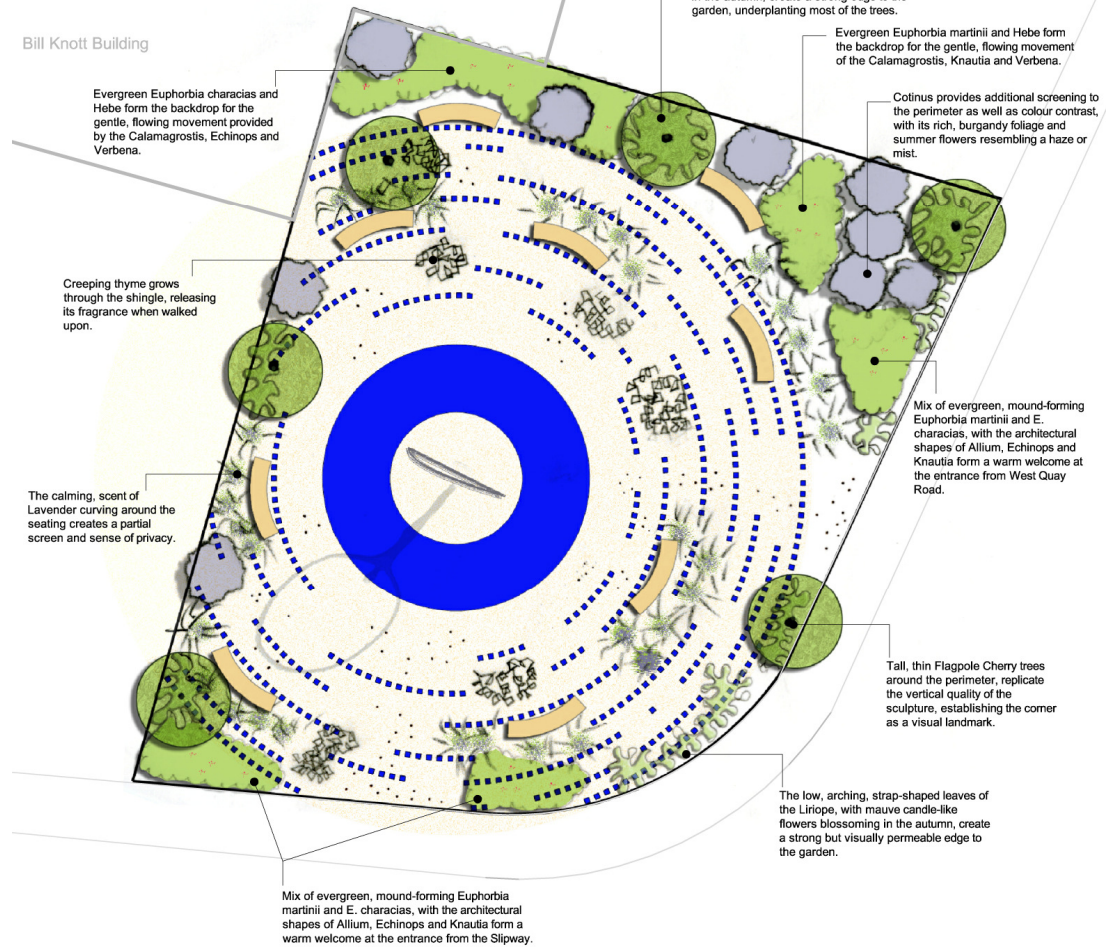


Soft Landscape Strategy

Small, private spaces are key in the memorial garden and are formed by the use of low, feathery planting, creating a calm atmosphere for those seeking a quiet place in which to reflect. While the perimeter planting retains a certain amount of permeability, it also screens the garden from the road. Tall, thin cherry trees, along with the central sculpture, establishes a prominent landmark on this corner.

Drought tolerant plants suitable for coastal conditions are mainly used, along with a colour palette of soothing tones, predominantly blues and mauves, with accenting reds.



Ripples

The selfless actions of RNLI volunteers touch the lives of others in so many different situations and guises, as the outward reaching rings of ripples caused by a single pebble cast into a pool. The concept of the garden is inspired by those ripples.

Centrally placed is Mike Speller's 5m tall bronze sculpture 'Endurance', encapsulating the ethos of the RNLI, courage, commitment and humanity. Its prominence creates a focus for reflection and commemoration.

At its base is a 4m diameter glass paving ring upon which names of lost volunteers are engraved, in addition to the plinth. The ring is under lit, providing atmospheric lighting at night. The sculpture is further surrounded by shingle with 'rings of ripples' in the form of recycled glass sets.

Curved stone seating upon which additional names may be engraved, accentuate the rings.

The garden creates a calm retreat and offers a certain amount of individual privacy around the seating with the focal point directed inward to the sculpture.

This forms a fitting memorial to commemorate those who have made a significant contribution towards saving lives at sea and in particular those who have died while on service.