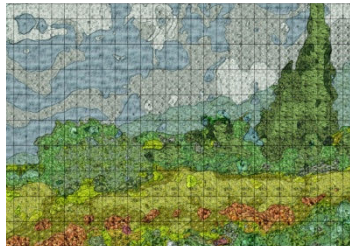




Images copyright Green Graphite Ltd.



Colour coded Photomontage over planting modules



Image copyright National Gallery

Van Gogh's 'A Wheatfield with Cypresses' painted with plants on a giant living wall canvas

Green Graphite Ltd was asked to participate in the design of the 10m x 7.5m living wall for General Electric and the National Gallery as part of the Gallery's carbon plan.

Installed in front of the Gallery at Trafalgar Square, the living wall will be visible to millions of visitors until October 2011.

Over thirty five different plant species were used in the design with over eight thousand plants to complete the 'painting'. The 'canvas' consists of living wall modules by ANS Group (Europe).

'We chose plants with colours relating to the original painting and whose textures complement the artist's style. For example, *Carex hachijoensis* 'Evergold' was used for parts of the wheatfield. This moves in such graceful waves with a breeze. The visual effect of light from the site's southerly aspect was also a factor, because it's an important element of Van Gogh's work.'

Other considerations were the plants' suitability to the ANS living wall system, the microclimate at Trafalgar Square, seasonal changes of the plants and the public's interaction with the wall. They had to be robust, evergreen, fully hardy, non-hazardous plants.

Shelley Mosco, director, said
'The real thrill is seeing the public's positive reaction to the living wall. This is definitely a painting one may touch - unlike the original!'

See the original painting in room 45 of the National Gallery,
<http://www.nationalgallery.org.uk/paintings/vincent-van-gogh-a-wheatfield-with-cypresses>



Green GraphiteLandscape Design

www.greengraphite.com
T + 44 (0)207 231 5344
E info@greengraphite.com
14 Smith Close | London SE16 5PB